

YELLOWSTONE NATIONAL PARK

CARIBOU-TARGHEE NATIONAL FOREST

JOHN D. ROCKEFELLER, JR. MEMORIAL PARKWAY

GRAND TETON NATIONAL PARK

BRIDGER-TETON NATIONAL FOREST

CARIBOU-TARGHEE NATIONAL FOREST

BRIDGER-TETON NATIONAL FOREST

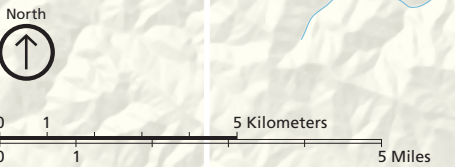
BRIDGER-TETON NATIONAL FOREST

BRIDGER-TETON NATIONAL FOREST

NATIONAL ELK REFUGE

GROS VENTRE WILDERNESS

JACKSON



- Turnout or overlook
- Distance indicator
- Unpaved road (4-wheel drive recommended)
- Multi-Use Pathway
- Trail
- Ranger station
- Lodging
- Campground
- Tent-only campground
- Food service
- Picnic area
- Store
- Gas station
- Self-guiding trail
- Horseback riding
- Marina

Do not use this map for backcountry hiking. Buy USGS topographic maps at visitor centers.

Flagg Ranch Information Station
Trailhead

Colter Bay Visitor Center
Indian Arts Museum

Jenny Lake Visitor Center
Jenny Lake Trailhead

Craig Thomas Discovery and Visitor Center

Jackson Hole Greater Yellowstone Visitor Center
Refuge sleigh rides (winter only)

Camping along Grassy Lake Road
Fourteen primitive sites are free; first-come, first-served; and have a picnic table, metal fire ring, pit toilet, but no potable water.

Road closed from early November to mid-May

Road closed to trucks, RVs, and trailers

Roads closed in winter

Road not recommended for trailers or RVs
Closed in winter

4-wheel drive required

To Pinedale

To Dubois

To Ashton

To Idaho Falls

To Victor

To Pinedale

To Pinedale

To Dubois

To Pinedale