

Services and Facilities

Check the park website www.nps.gov/yell or newspaper for seasonal dates of services and facilities.

Accessibility
Entrance stations and visitor centers offer a free guide, *Accessibility in Yellowstone*, describing wheelchair-negotiable facilities.

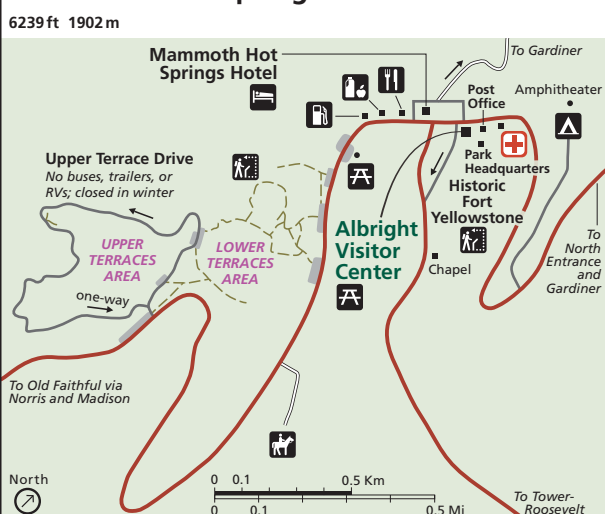
Emergencies: Call 911

Medical clinic

Parking area (see detail maps at right)

- Ranger station
- Campground
- Lodging
- Food service
- Picnic area
- Store
- Gas station (some have auto repair)
- Recycling
- Self-guiding trail or boardwalk
- Horseback riding
- Boat launch

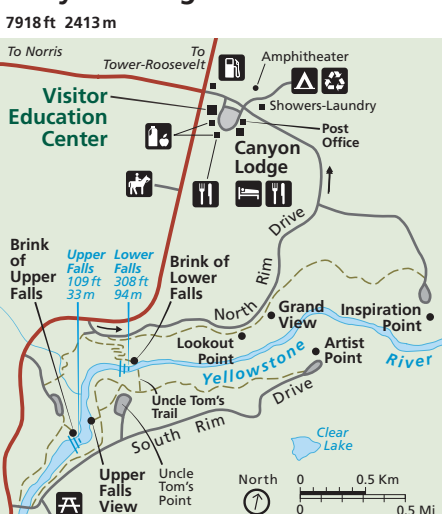
Mammoth Hot Springs



Old Faithful



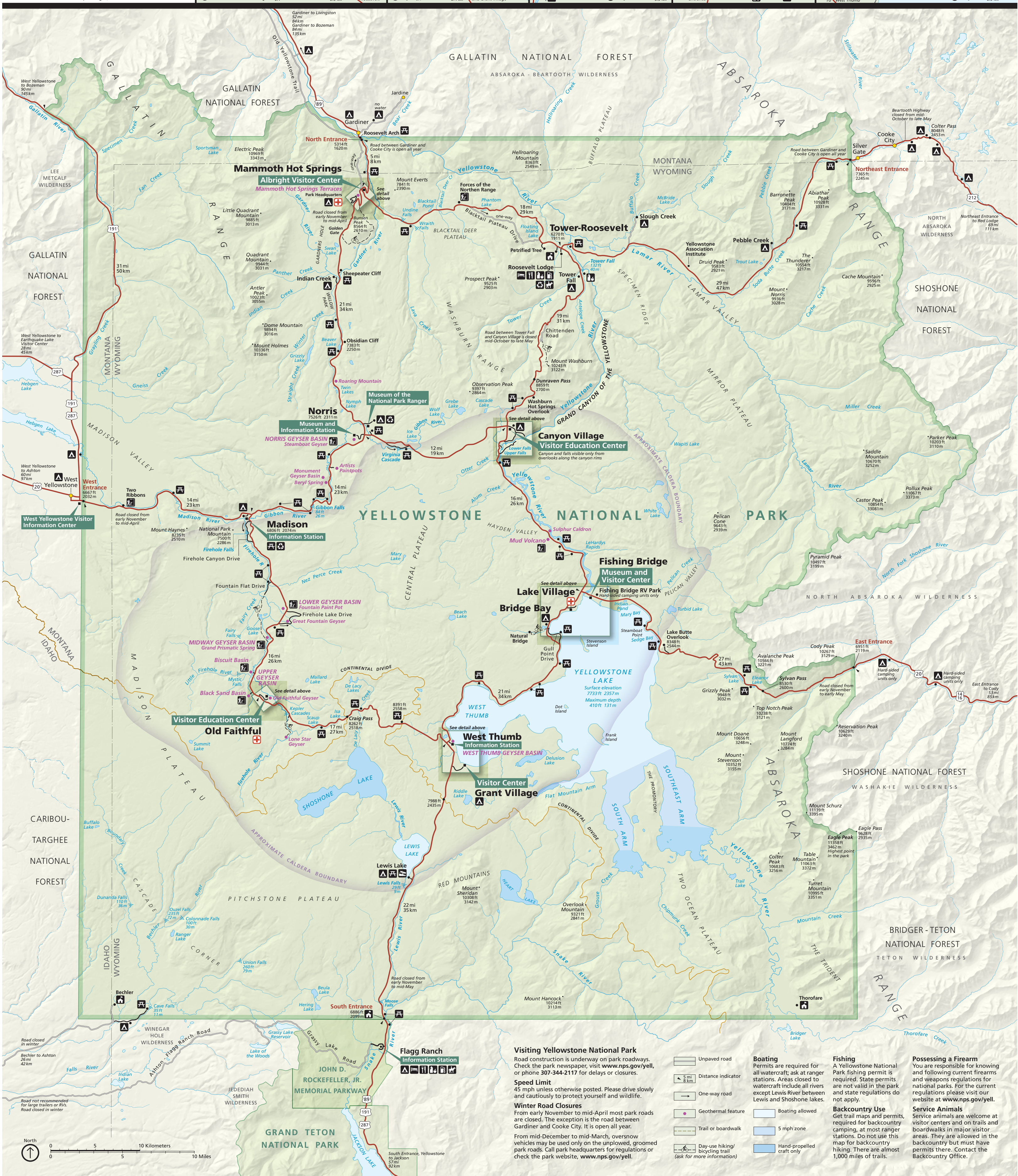
Canyon Village



West Thumb and Grant Village



Fishing Bridge, Lake Village and Bridge Bay



Visiting Yellowstone National Park

Road construction is underway on park roadways. Check the park newspaper, visit www.nps.gov/yell, or phone 307-344-2117 for delays or closures.

Speed Limit

45 mph unless otherwise posted. Please drive slowly and cautiously to protect yourself and wildlife.

Winter Road Closures

From early November to mid-April most park roads are closed. The exception is the road between Gardiner and Cooke City. It is open all year.

From mid-December to mid-March, oversnow vehicles may be used only on the unplowed, groomed park roads. Call park headquarters for regulations or check the park website, www.nps.gov/yell.

- Unpaved road
- Distance indicator
- One-way road
- Geothermal feature
- Trail or boardwalk
- Day-use hiking/bicycling trail (ask for more information)

Boating

Permits are required for all watercraft; ask at ranger stations. Areas closed to watercraft include all rivers except Lewis River between Lewis and Shoshone lakes.

- Boating allowed
- 5 mph zone
- Hand-propelled craft only

Fishing

A Yellowstone National Park fishing permit is required. State permits are not valid in the park and state regulations please visit our website at www.nps.gov/yell.

Backcountry Use

Get trail maps and permits, required for backcountry camping, at most ranger stations. Do not use this map for backcountry hiking. There are almost 1,000 miles of trails.

Possessing a Firearm

You are responsible for knowing and following current firearms and weapons regulations for national parks. For the current regulations please visit our website at www.nps.gov/yell.

Service Animals

Service animals are welcome at visitor centers and on trails and boardwalks in major visitor areas. They are allowed in the backcountry but must have permits there. Contact the Backcountry Office.